



# Mine to Port

Mine to Port is published for the employees,  
retirees and partners of IOC.



Merry Christmas  
and Happy New Year !

Safe docking | 03

Small animals play big role | 04

Phase 1 on track | 06

Celebrating Labrador's winter spirit | 07

Cycling for a cause ! | 08

# Message from the President



As 2010 draws to an end, I would like to take the opportunity to look back at the key events of the past year at IOC.

First, 2010 was a time of major changes, starting with our management team. I am truly pleased to say that the right people are now in the right positions and are ready to deploy all of the necessary changes for the company to keep on growing. On the other hand, I have to acknowledge that we may not have made as much progress on certain projects as I hoped. I am nonetheless convinced that the required framework for implementing major projects, such as updating our human resource processes, our Site Safety Acceleration Program and our expansion project, is now solid and operational.

On the topic of watershed events, I want to honour the memory of Eldon

Perry. We were all shaken by his death, and as the Holiday Season draws closer, my thoughts are with his family, who will miss him dearly. I truly hope that each and every day we devote the necessary, constantly renewed efforts to achieve our objective of zero injuries, so that we never see another accident of this kind.

Despite this tragedy, I have to say that I am proud of our overall performance. Our relations with the various levels of government have improved. Our leaders throughout the company have an ever-better understanding of their roles and are developing their leadership skills. Our community relations are a source of pride and motivation for us all, and our business strategy, aimed at making us a jewel of the Rio Tinto Group crown, is off to an excellent start.

In short, I could list a number of equally tangible things that make IOC an extremely vibrant company. I simply hope that we will do even better in 2011, by building on our 2010 achievements, and that all of us will be able to see a difference.

In the meantime, I wish all of you and your families an excellent Holiday Season. May this precious period be filled with health, peace and love.

Zoë Yujnovich

# Safe docking



**Three signs were installed recently on the A, B and C dolphins at the loading dock, in order to reduce risks to a minimum and facilitate communications for ship docking.**

Previously, when a ship drew alongside our dock, the linesmen had to give the sailors mooring instructions. As the ships that serve our facility come from around the world and crew members often have a limited grasp of English, the linesmen frequently found themselves up against language problems. The distance between ship and the A, B and C dolphins and the noise of the wind, waves and engines also hindered communications between ship crews and linesmen.

The three new signs were installed on the dolphins at the end of September. They can display three different instructions, namely Stop (❌), Slacken Cables (⏴) and Tighten Cables (⏵). The linesmen change the display at the appropriate time. To help the linesmen do their job, all the sailors have to do is follow the instructions displayed on the signs. The shipping agency informs the captains of ships headed for our dock about this work procedure by sending

them an explanatory sheet. Ship crews are thus aware of our way of doing things before they arrive in Sept-Îles Bay.

The idea was generated during an annual meeting of marine agency, linesmen, tugmasters and docking pilots held at the start of 2010. Sony Aucoin, Senior Team Manager – Shipping Services explains: “We all agreed that we had to improve safety around this job. At the start we found the idea of signs a bit farfetched, but the more we worked on it, the more it made sense. Finally, after two months’ use, we are fully satisfied and very proud of the initiative!”

The project is so successful that we are thinking of sharing it with our business partners around the bay and Rio Tinto.

Sony and his team wish to thank Christian Fortin, senior electrical technologist, for all the time and efforts invested implementing this project.



One of the linesman waiting next to sign so that he can choose the proper signal to ensure the safety of his colleagues.

# Small animals play big role

## Unique IOC program is enhancing biodiversity and helping to reclaim former tailings area

If you were to walk through IOC's former tailings area, you might stumble across a series of low plywood boxes. Each has a hinged lid and eight circular holes. Peer into one of these holes for a closer look, and you might come face to face with a meadow vole (*Microtus pennsylvanicus*). You have just met a key member of IOC's small animal translocation project.

For such a small whiskered creature — it weighs about 50gm — the meadow vole is having an outside impact on IOC's efforts to enhance local biodiversity.

### A massive reclamation project

"With the gradual reintroduction of shore and water birds, songbirds and various plants, the project is going well," said Lee Preziosi, Superintendent HSE Assurance, "Iron ore tailings are completely inert, so creating an ecosystem on top of them is safe for both animals and humans." By 2003, IOC's tailings project had grown into the largest environmental

remediation project in Canada, going well beyond what Canadian environmental regulators require.

Nevertheless, achieving a healthy level of biodiversity is possible only when you know what species are thriving on site. As Lee explained, this meant doing a full survey of flora and fauna in order to slowly build a picture of the area's biodiversity.

IOC engaged Golder Associates and other consulting firms to conduct plant and animal surveys on the tailings area and adjoining IOC lands and surrounding lakes. Golder assigned Katherine Hogan-Barker, a biologist and Golder's Project Manager for Labrador City, to conduct the 2003 survey of "small animals."

Working under the IOC environmental team, Katherine set humane trap lines across the tailings and adjacent IOC areas, and "found something surprising," she recalled. "While we had set 70% of the traps on the tailings site, only 8% of the animals were captured there."

The scarcity of small animals on the tailings site was a mystery, since a wide variety of birds and plants had gradually returned to make their homes there.

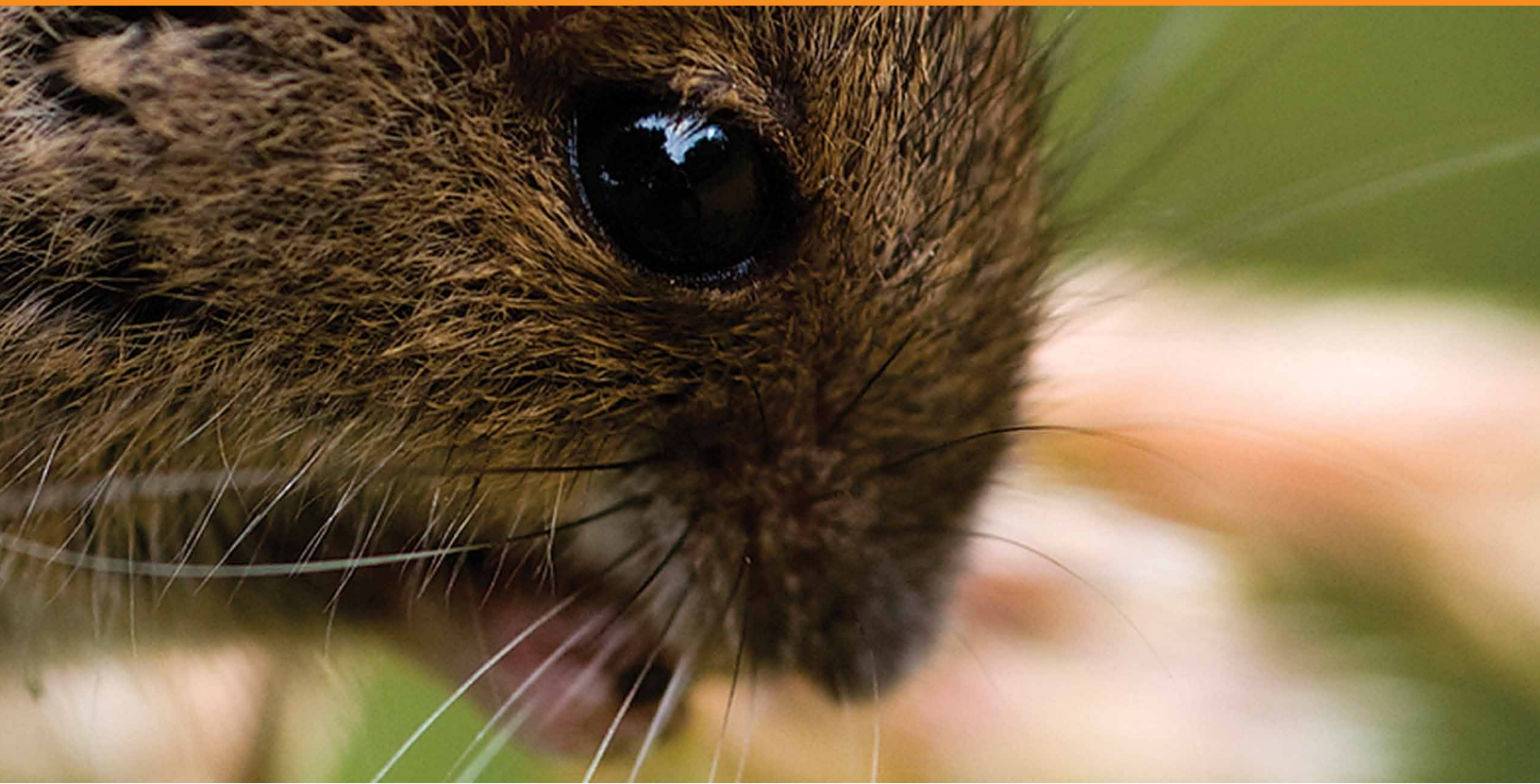
### The "island effect"

According to Lee, "Our hypothesis was that we're seeing an "island effect" on the tailings area, which is surrounded by Wabush Lake on three sides and an automated railway, roads and pipes on the fourth side. These man-made barriers across the only possible land route were keeping small animals from migrating."

### Moving day arrives

In 2006, Katherine reset the trap lines, this time outside the tailings site. She again identified and recorded the captured animals, and also tagged them for future study. Katherine brought the animals to the tailings site and installed them into acclimatization boxes — or "small-mammal hotels," as she and Lee jokingly call them.

Each plywood box has eight compartments containing food, water and woodchips for bedding. The idea



is to seal each animal into the box for 24 hours, enabling it to acclimatize to local sounds and smells, and gradually reduce their level of stress.

Following their brief quarantine, Katherine unsealed the “hotel rooms” and the animals were free to venture out or make the box their permanent home. During this phase, Katherine’s team translocated 24 animals, chiefly meadow and red-backed voles, as well as meadow jumping mice.

#### **Nature takes its course**

With the animals safely installed at their new home, the IOC environmental team revisited the site one year later – following a typically icy Labrador winter – to survey the vole population.

For Phase II, Katherine reset the traps and made 52 captures – although only 23 different animals were recorded, as several were trapped more than once. Katherine estimates that the former tailings area is 75 times more abundant in small animals than during the 2003 survey.

The project is so instructive in what can be possible, that IOC launched a “wetlands/biodiversity” school program for local Grade 4 students. The kids receive a talk about biodiversity, followed by a class trip to the tailings site.

#### **A sign in the sky**

Phase II appears to have all the marks of success and the 2010 survey suggests that a sustainable small mammal population is now thriving on the tailings.

According to Lee, The best indication that biodiversity is returning to IOC’s tailings site is plain when you look skyward. A growing number of hawks can be seen hovering over the tailings site, and one of their favourite meals is...*Microtus pennsylvanicus*. Nature is clearly taking its course.

# Phase 1 on track



While last year's expansion update was all about plans and projections for the future, this year's update is mostly about accomplishments – the milestones already passed during Phase 1.

According to Mario Courchesne, Site Manager for Phase 1, "Following the start of the expansion on May 6 of this year, the project has made progress on several fronts, including extensive work during the June shutdown. For me, watching it unfold is like a dream come true."

## Some of the most important Phase 1 milestones:

### Autogenous Grinding Mill 14

The structural and mechanical demolition on AG Mill 9 was completed, and concrete demolition has just begun, setting the stage for construction of AG Mill 14.

### Overland conveyor

Earthwork, including excavation, drilling and blasting for the conveyor road is scheduled for completion in January 2011. Meanwhile, 95% of the OLC support bent foundations have

been poured. These will support the steel frame that holds the conveyor at heights ranging from 10 to 75 ft.

The OLC drive house foundation is also complete, and is just waiting for a concrete slab at grade to be poured in January 2011. The concrete track sleepers and steel for the OLC have also begun to arrive. The OLC will cover a distance of 6.8 km and have a capacity of 6,000 tonnes per hour.

### Ore storage barn

Concrete foundations for eight out of 10 steel ore barn towers have been poured, and tower #2 has been erected. Crews have also begun assembling the conveyor gallery on the working/launching platform.

### Crusher

The new crushing station at the Luce pit, which will significantly increase capacity, is also making progress. The MSE wall has been completed, and the steel needed to build the new crusher has already been received from Serbia.



Tower #2



The wall surrounding the new crusher

# Celebrating Labrador's winter spirit



**Blessed with exceptional winter conditions, it's no wonder the people of Labrador are avid skiers and snowmobilers. IOC has been supporting – and celebrating – healthy winter fun right from the start, forging strong partnerships with the region's top recreational clubs.**

## **Menihék Nordic Ski Club**

Former training centre for Canadian and U.S. ski teams, Menihék has a glorious history, and its longstanding president, Gerry Rideout, is proud keeper of the flame.

As a longtime partner and sponsor, donating \$11,000 in 2010, IOC executives have sat on the Menihék board for years. "IOC staff is often at the club with their families," said Gerry, himself an IOC retiree. "They volunteer, serve meals, time races. They're strong believers and users of our club."

One measure of IOC's partnership is the significant sums it invested to replace some trails, which were disrupted in 2008 by a planned overland conveyor. "IOC showed real commitment to the community," Gerry said. "Even though they cancelled all capital projects during last year's economic slowdown, they still pushed ahead with this project." Today, Menihék's historic, log-style lodge is a hive of activity as school groups, lessons and family events overlap. To generate revenue, the lodge hosts business meetings, including many for IOC, and caters private affairs – about 100 events annually. In fact, Menihék's open-pit barbecue enjoys a reputation that rivals even Labrador's pristine snow conditions.

## **Smokey Mountain Ski Club**

IOC's partnership with Smokey Mountain Ski Club is equally longstanding – in fact IOC founded the club and has over the years donated money, materials, support and contributed members to the board. More recently, however, financial

difficulties compounded by much-needed repairs to ski lifts, have driven the club to the verge of closing.

IOC has stepped in to help, donating \$25,000 and in-kind support valued at some \$7,000 for the current season. Board member and IOC representative Brendon Burrows, Manager-Asset Management, has been instrumental in getting the lifts inspected and operable for this season.

With Brendon's tireless work and IOC support, skiers hope "Smokey Mountain" will return to its glory days.

## **White Wolf Snowmobile Club**

If it's your day off in Labrador City and you're not on skis, you're likely on a snowmobile and belong to the White Wolf Snowmobile Club. With 1,800 members and "potential for 3,000," according to president Pat Whiffen, the club is thriving.

IOC is a major partner, contributing \$10,000 to this year's budget and supporting the club's dedication to safety, especially where trails intersect with road and rail.

IOC's support extends to the club's premier activity, Cain's Quest. Arguably the most rugged and certainly most picturesque snowmobile endurance race in North America, Cain's Quest 2010 was cancelled due to mild weather, but IOC is on board for next year's edition, which is expected to draw competitors from as far away as Alaska.

# Cycling for a cause!



Alain Pelletier (second from left) with some other participants in the Défi Cycliste Nord Côtier waiting on the starting line on June 28 in Port-Cartier.

IOC has a number of cycling enthusiasts among its employees at Sept-Îles. While some of them practice this sport every evening and weekend, others use it as way to get to work. For Line Chambers, Senior Accountant – Finance, and Alain Pelletier, Operator/Maintainer Electrical 2 – Communications & Signals, it's more like a passion.

Although Line has been cycling for only three years, she has unwavering determination! Just this summer, she participated in three different fundraisers for a cause that is close to her heart—cancer. She participated in the 4th Vélo Tour de la Gaspésie (913 km in 6 days) organized for the benefit of the Association du cancer de l'Est du Québec (ACEQ), in the Défi Vélo Plein Air (350 km in 2 days) also for ACEQ as well as the Randonnée Rose, (350 km in 2 days) for the benefit of breast cancer. "It is a very demanding sport where endurance is key. You also need to know and respect your limits. To get to the finish line, you just need to find the pace that's right for you and stick to

it, rather than try to keep up with the others," Line explains. It's worthy of note that only 4 of the 41 participants in the 4th Vélo Tour were women – our congratulations to Line! – and the event raised \$39,023 for the ACEQ.

As far as Alain is concerned, he's been cycling for many years. This summer, he took part in the Défi cycliste Nord Côtier 2010 for the benefit of the Fondation des pompiers du Québec pour les grands brûlés (Quebec firemen's fund for severe burn victims). He and 13 other cyclists left Port-Cartier on June 28 to go to Roberval where the firemen's provincial competition was held this year. They covered the 840 km that separate the two cities in only five days. "In spite of very difficult weather conditions, the activity was a success from every point of view, whether it was safety, financial results or just the pleasure of participating", Alain explained, proud that his initiative and that of his colleagues had been able to raise \$11,000 for this very important cause.



Line Chambers practicing her favorite sport during a training camp in Spain.

It goes without saying that the cyclists that participate in these events are in excellent physical condition and need to undergo intense training before embarking on this type of tour. They must also raise the funds required to register for these activities. So if you see Line or Alain making the rounds, don't hesitate to encourage them – and you can rest assured that your donation will make good mileage!



To all employees & Retirees of Iron Ore Company and QNS&L. 2010 has been one of the most exciting and vibrant years in our history with the start of the expansion projects which will insure the viability and future of IOC. Our community has taken on renewed excitement as new employees start working at IOC and make Labrador West their home. We are reminded by the serious accident earlier this year on March 18th that took the life of Eldon Perry and seriously injured Joshua Hayse to keep safety in our minds at all times. As we visit our family and friends during this festive season, please don't Drink and Drive. On behalf of membership of United Steelworkers Local 5795, I want to wish everyone a Merry Christmas and Happy New Year.

**George Kean**  
President USW  
5795

The executive committee of T.U.T. (1843) would like to take this opportunity to wish a Merry Christmas and a Happy New Year to the entire IOC & QNS&L family. This past year has seen our ranks increase by over 30%. Although these new employees bring with them enthusiasm and energy, let's help them in this new professional challenge since we are all our brother's keeper when it comes to health and safety in the workplace.

**Roby Vaillancourt**  
General Manager T.U.T. (1843)



On October 23, QNS&L Shops organized an "Open House" day for its employees. A total of 192 people had the opportunity of visiting the various areas of the shops (locomotives, cars, garage, machine shop). Each employee had the responsibility of showing the premises to his family, while respecting security standards. And can you guess what impressed the visitors most? How clean everything was. Bravo to the Shops team for this super initiative!



# Welcome to our new colleagues

## BUILDING

Clive Jr Hamilton, Maintainer Operator Electrical 1  
**COMMUNICATIONS & SIGNALS**  
Simon Boudreault, Maintainer Operator Electrical 2  
Nelson Bourgault, Maintainer Operator Electrical 2

## CONCENTRATOR

Cara Benson, Operator Maintainer  
Christopher Dyer, Operator Maintainer  
Damon Gillam, Team Leader - Operations  
Maria Hawco, Operator Maintainer  
Chad Philpott, Operator Maintainer  
Mitchell Pike, Operator Maintainer  
James Potter, Team Leader - Electrical  
Lloyd Reid, Planner - Maintenance  
Edmund Tremblett, Team Leader - Maintenance

## ENGINEERING (LC)

Benjamin Aldous, Engineer in training - Electrical  
Mark Burt, Engineer in training - Mechanical  
Steve Chan, Engineer Senior - Mechanical  
Shabbar Sayed, conseiller technique principal  
Geoffrey Stevens, Engineer in training - Mechanical  
Shankar Thakur, Engineer - Reliability  
Brian White, Engineer in training - Electrical

## ENGINEERING (SI)

François Dubé, Electrical Engineer  
Marc Lévesque, Engineer Senior - Electrical  
Dominique Vibert, Mechanical Engineer

## EXPANSION PROJECTS

Sophie Favier, Administrative Assistant  
Réjean Foisy, Manager of Studies  
Earl Wall, Senior Team Leader

## FANS

Daniel Marche, Maintainer Operator Mechanical 2

## FEED PREPARATION

Kyle Hennebury, Maintainer Operator Mechanical 2  
Adam Nichols, Maintainer Operator Mechanical 2  
Robert Patterson, Maintainer Operator Mechanical 2

## FINANCE

François Brisson, Advisor - Insurance & Risk Management  
Lindy Lebrun, Senior Accountant - Financial Control

## FILTERING & BALLING

Phillip Anthony, Maintainer Operator Mechanical 2  
Scott Clark, Maintainer Operator Mechanical 2  
Daniel Critch, Maintainer Operator Mechanical 2  
Christopher West, Maintainer Operator Mechanical 2

## HUMAN RESOURCES

Carl Dubé, Vice President - Human Resources  
Josyane Ouellet, Administrative Assistant

## INTERNAL COMMUNICATIONS

Julie Cusson, Manager

## INVENTORY

Christopher George, coordinator - Supply  
Bryan Jerrett, Specialist - Procurement  
Steve Ste-Marie, Specialist - Procurement

## IT SERVICES

Chad Pinksen, Analyst - Telecom  
Robert Freaque, Analyst - Help Desk

## LABORATORY (SI)

Keven Martel, Process Controller

## LOADOUT

Shilo McGrath, Operator Maintainer

## MAINTENANCE OF WAY

Yannick Beaudin Lessard, Senior Operator Maintainer  
Christian Valcourt, Senior Operator Maintainer

## MATERIAL HANDLING

Justin Kean, Maintainer Operator Mechanical 2

## MM GARAGE

Kenneth Fagan, Planner

Neil Kent, Advisor - Contracts Management  
Lorne Winters, Maintainer Operator Mechanical 2  
Rodney Wooland, Team Leader

## OPERATIONS & BUSINESS PLANNING

Courtney Bartlett, Lean Advisor  
Edward Dalton, Lean Advisor  
Gerry Robinson, Lean Advisor  
Natasha Rumbolt, Lean Advisor

## PALLET SHOP

Bryan Barry, Team Leader

## PELLET PLANT

Bruce Boone, Team Leader - Maintenance  
Denise Hynes, Operator Maintainer  
Sandra Hynes, Operator Maintainer  
Rodger Hulan, Operator Maintainer  
John Keith, Operator Maintainer  
Adrian Lewis, Operator Maintainer  
Justin Moulard, Operator Maintainer  
Helen Stagg, Operator Maintainer  
Aaron Tobin, Maintainer Operator Electrical 1  
Steven Williams, Operator Maintainer

## POWER DISTRIBUTION

Stephen Kendall, Maintainer Operator Electrical 1  
Justin Kieley, Maintainer Operator Electrical 1

## PRIMARY ORE

Terry Baker, Operator Maintainer  
Chelsea Beals, Operator Maintainer  
Stephanie Boyd, Operator Maintainer  
Terry Brait, Operator Maintainer  
Kimberley Burton, Operator Maintainer  
Anita Caines, Operator Maintainer  
Steven Campbell, Manager - Operations  
Gregory Chubbs, Operator Maintainer  
Shawn Chubbs, Operator Maintainer  
Perry Clarke, Operator Maintainer  
Paula Costigan, Operator Maintainer  
Rory Côté, Operator Maintainer  
Yvon Daigle, Operator Maintainer  
Rikee Drover, Operator Maintainer  
Shawn Drover, Operator Maintainer  
Lindsay Dumaresque Hoffe, Operator Maintainer  
Heather Edmunds, Operator Maintainer  
Beverly Flynn, Operator Maintainer  
Eugene Gopalkista, Manager - Technical Services  
Colin Gosse, Operator Maintainer - Projects  
Darrell Goulding, Operator Maintainer  
Norman Grant, Operator Maintainer  
Jonathan Green, Operator Maintainer  
Neico Hancock, Operator Maintainer  
Paula Haskell Amador, Operator Maintainer  
Sheldon Hedderston, Operator Maintainer - Projects  
Kelly Jean Hodge, Operator Maintainer  
Lin Kramer, Chief Engineer - Mine  
Dean Jacobs, Operator Maintainer  
Gordon Janes, Operator Maintainer  
Michel Lalumière, Operator Maintainer  
Nadine Leblanc, Team Leader  
Pratt Lewis, Operator Maintainer  
Scott Macey, Operator Maintainer  
Elizabeth Mackay, Operator Maintainer  
Tanya Maddigan, Operator Maintainer  
Carol Maddox, Operator Maintainer  
Kimberly Marquis, Operator Maintainer  
Glen Noble, Operator Maintainer  
Alexander Noël, Operator Maintainer  
Christopher Oake, Operator Maintainer  
Edmund O'Keefe, Operator Maintainer  
Llewellyn Osmond, Operator Maintainer

Stephen Patey, Operator Maintainer  
Rhonda Peckford, Operator Maintainer  
Melissa Philpott, Operator Maintainer  
Meagan Pickett, Operator Maintainer  
Robert Pollett, Operator Maintainer  
Gordon Powell, Surveyor  
John Powell, Operator Maintainer  
Justin Reid, Operator Maintainer  
Ashley Rodway, Operator Maintainer  
Hiram Ropson, Operator Maintainer  
Stewart Sharpe, Operator Maintainer  
Vicki Simms, Operator Maintainer  
Robin Smith, Operator Maintainer  
Dennis Sobey, Team Leader  
Anthony Sturge, Operator Maintainer  
Tyronne Taylor, Operator Maintainer  
Gary Travers, Team Leader  
Danielle Ward, Operator Maintainer  
Serena Webb, Operator Maintainer  
Joanne Whalen, Operator Maintainer  
Melissa Winsor, Operator Maintainer  
Colin Young, Advisor - Tire Management

## PROCESS ENGINEERING

Krista Ash, Engineer in training  
Robert Rose, Maintainer Operator Mechanical 2  
Denley Ward, Process Technician  
Seranica Williamson, Process Specialist

## QNS&L SHOPS

Maxime Bourgeois, Maintainer Operator Mechanical 2 - Garage  
Sébastien Deschênes, Maintainer Operator Mechanical 2 - Cars  
Guillaume Joseph, Maintainer Operator Mechanical 2 - Locos  
Danny Leblanc, Maintainer Operator Mechanical 2 - Garage  
Pierre-André Lévesque, Maintainer Operator Mechanical 2 - Cars  
Kevin Strickland, Maintainer Operator Mechanical 2 - Garage

## RESOURCES DEVELOPMENT

Christopher Adams, Superintendent - Process Engineering  
David Blechynden, Superintendent - Strategic Planning  
Safdar Sultan, Geologist - Projects

## SECURITY

Adam Baker, Security Officer  
Mark Brophy, Security Officer  
Jeffrey Ivani, Security Officer  
Randolph Leonard, Security Officer  
Jordan Parrill, Security Officer  
Ryan Turpin, Security Officer

## STATION & YARD

Garry Poitras, Operator Maintainer  
Martin Vallee, Operator Maintainer

## TERMINAL

Clyde Bobbitt, Operator Maintainer  
Sarah Decoste, Operator Maintainer  
Jean-Pierre Desrosiers, Administrator - Marine Services  
Jérôme Foisy, Administrator - Marine Services  
Kevin Ross, Operator Maintainer  
Malcolm Stubbert, Operator Maintainer  
Michel Tassy, Administrator - Marine Services

## VEHICLE SHOP

Jeffrey Barrett, Team Leader  
Alvin Fancy, Maintainer Operator Mechanical 2  
Adam Maracle, Maintainer Operator Mechanical 2  
Ian Marsh, Maintainer Operator Mechanical 2  
Damian Strangemore, Maintainer Operator Mechanical 2

## WAREHOUSE (LC)

Cameron Abbott, Storeperson  
Candice Gaudon, Storeperson

## In memoriam We extend our deepest sympathy to the families of

John Hurley, May 23, 2010  
Gerald Keith Barrett, June 19, 2010  
Timothy Fahey, June 21, 2010  
Guy R. Genest, July 13, 2010  
Sandy Bursey, July 15, 2010  
Lawrence Hasley, July 18, 2010  
Léandre Carré, July 24, 2010  
François Aster, July 25, 2010

José Lopes, July 27, 2010  
Jean W. Vollant, July 27, 2010  
George Thistle, July 28, 2010  
Claude Labrie, July 28, 2010  
Guy Lamontagne, August 5, 2010  
Raymond Verreault, August 13, 2010  
James Chance, August 21, 2010  
Simon Dominique, August 22, 2010

Kurt Ogris, August 29, 2010  
Clarence Jacobs, September 2, 2010  
Antonio Dacosta, September 9, 2010  
Claude Cimon, September 14, 2010  
Winston Power, September 24, 2010  
Vitor Jacques, October 14, 2010  
Ronald Smith, October 15, 2010  
Philip Brake, October 23, 2010  
Gunther Swierkot, October 24, 2010

## Mine to Port The team :

Sarah Budgell, Internal Communications  
Darlene Collins, Product Manufacturing  
Pascale Gauthier, Sustainable Development and Environment  
Barry Hillier, Engineering  
Sean Hiscock, Health and Safety  
Éric Labrie, Transport and Shops  
Judith Leclerc, Lean  
Connie Lane, Primary Ore

Hugues Lapierre, Terminal  
Nicolas Mercier, IPT  
Krista Norman, External Relations  
Randy Philpott, Central Services  
Carl Poirier, Engineering  
Natalie Rouleau, Internal Communications  
Stephanie Ste. Marie, Human Resources  
Chantil Strangemore, Information System and Technology

## Iron Ore Company of Canada

Produced by the Communications Department  
www.ironore.ca • natalie.rouleau@ironore.ca • Tél : 418 968-7400 #7655  
Editing : Naika Communications inc.



## Publications Mail:

Account # 1006379 • Agreement # 40005861  
Iron Ore Company of Canada, 1 Retty Street, Sept-Îles (Québec) G4R 3C7